



DEA No. RA0571996
FL License # CMTL-0003
CLIA No. 10D1094068

Certificate of Analysis

Compliance Test

TSTL Holdings
112 N. SNEAD ST.
BOAZ, AL 35957

Batch # D8HF
Batch Date: 2022-03-17
Extracted From: Hemp

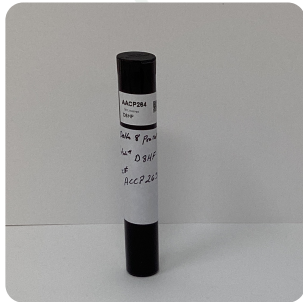
Test Reg State: Florida

Order # TST220317-020001
Order Date: 2022-03-17
Sample # AACP264

Sampling Date: 2022-03-21
Lab Batch Date: 2022-03-21
Completion Date: 2022-03-23

Initial Gross Weight: 8.547 g
Net Weight: 0.974 g

Number of Units: 1
Net Weight per Unit: 974.000 mg



Product Image

Potency
Tested

**Delta 8/Delta 10
Potency 12**

Specimen Weight: 198.450 mg

Analyte	LOD (%)	LOQ (%)	Result (mg/g)	(%)
Delta-8 THC	0.000026	0.001	98.370	9.837
CBGA	0.000008	0.001	49.440	4.944
CBDA	0.00001	0.001	41.390	4.139
CBD	0.000054	0.001	24.070	2.407
CBG	0.000248	0.001	4.430	0.443
CBC	0.000018	0.001	2.230	0.223
THCA-A	0.000032	0.001	0.590	0.059
CBN	0.000014	0.001	0.540	0.054
CBDV	0.000065	0.001	0.220	0.022
Delta-9 THC	0.000013	0.001	<LOQ	
Delta-10 THC	0.000003	0.001	<LOQ	
THCV	0.000007	0.001	<LOQ	

Tested
(LCUV)

Potency Summary

9.837% Total Delta 8 95.810mg	- Total Delta 10 None Detected
0.052% Total THC 0.510mg	6.037% Total CBD 58.800mg
4.779% Total CBG 46.550mg	0.054% Total CBN 0.530mg
0.246% Other Cannabinoids 2.400mg	21.005% Total Cannabinoids 204.590mg

Xueli Gao
Lab Toxicologist
Ph.D., DABT

Aixia Sun
Lab Director/Principal Scientist
D.H.Sc., M.Sc., B.Sc., MT (AAB)



Definitions and Abbreviations used in this report: *Total CBD = CBD + (CBD-A * 0.877), *Total CBDV = CBDV + (CBDVA * 0.87), *Total THC = THCA-A * 0.877 + Delta 9 THC, *Total THCV = THCV + (THCVA * 0.87), *CBG Total = (CBGA * 0.877) + CBG, *CBN Total = (CBNA * 0.877) + CBN, *Total CBC = CBC + (CBCA * 0.877), *Total THC-O-Acetate = Delta 8 THC-O-Acetate + Delta 9 THC-O-Acetate, *Other Cannabinoids Total = Total Cannabinoids - All the listed cannabinoids on the summary section, *Total Detected Cannabinoids = Delta8-THC + Total CBN + CBT + Delta8-THCV + Total CBG + Total CBD + Total THCV + CBL + Total THC + Total CBC + Total CBDV + Delta10-THC + Total THC-O-Acetate, *Analyte Details above show the Dry Weight Concentrations unless specified as 12% moisture concentration. (mg/ml) = Milligrams per Milliliter, LOQ = Limit of Quantitation, LOD = Limit of Detection, Dilution = Dilution Factor (ppb) = Parts per Billion, (%) = Percent, (cfu/g) = Colony Forming Unit per Gram (cfu/g) = Colony Forming Unit per Gram, LOD = Limit of Detection, (µg/g) = Microgram per Gram (ppm) = Parts per Million, (ppm) = (µg/g), (aw) = aw (area ratio) = Area Ratio, (mg/Kg) = Milligram per Kilogram, *Measurement of Uncertainty = +/- 10%

This report shall not be reproduced, without written approval, from ACS Laboratory. The results of this report relate only to the material or product analyzed. Test results are confidential unless explicitly waived otherwise. Accredited by a third-party accrediting body as a competent testing laboratory pursuant to ISO/IEC 17025 of the International Organization for Standardization.